



INTEGRATED
TEMPERING VALVE

REDUCED
INSTALLATION TIME

ADJUSTABLE TO DELIVER
50°C WATER AT THE TAP

COMES ON STEADY, HOT AND STRONG

INSTALL A





GAS



ELECTRIC

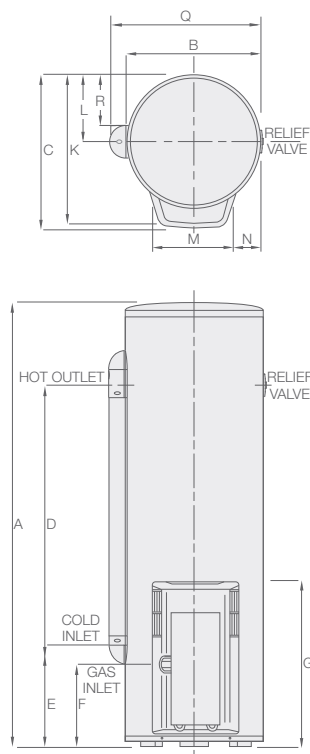


SOLAR

INTRODUCING RHEEMPLUS®

RheemPlus® is the perfect choice for new homes or when replacing existing water heaters. RheemPlus® stores water above 60°C yet delivers water not exceeding 50°C so there's no need to install a tempering valve, making installations quicker and easier for the plumber and safer for the home owner.

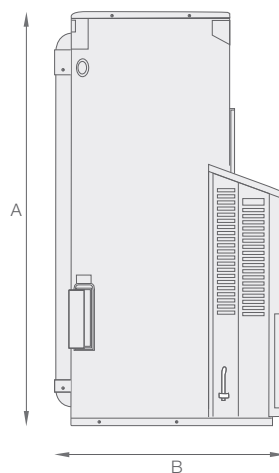
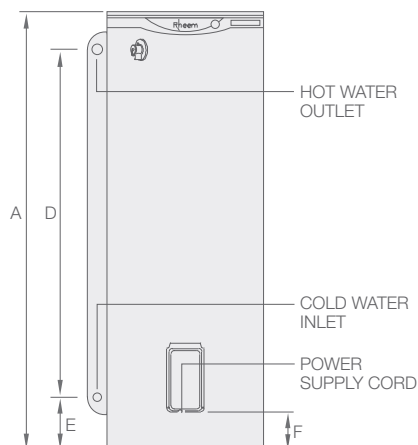
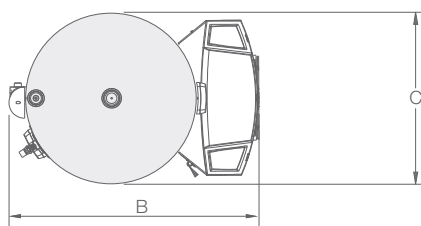
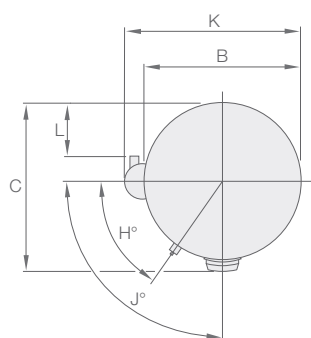
- Tempering valves not required²
- Fast & easy installation
- Neat appearance
- Mains pressure at multiple taps
- Available in gas, electric & heat pump models
- Adjustable to deliver 50°C water at the tap



RheemPlus® 5 Star Gas			
Gas Models		354265	354295
Hot Water Delivery		120	150
Initial Storage Capacity		130	160
Height	A mm	1622	1922
Width	B mm	485	485
Depth	C mm	556	556
	D mm	988	1213
	E mm	328	409
	F mm	298	298
	G mm	600	600
	K mm	520	520
	L mm	240	240
	M mm	297	297
	N mm	97	97
	Q mm	545	545
	R mm (RheemPlus® only)	182	182
Weight (Empty)	kg	75	85
Water Inlet / Outlet Connections	Rp	¾ - 20	¾ - 20
Gas Inlet Connection	Rp	½ - 15	½ - 15
Relief Valve Setting	kPa	1400	1400
Expansion Control Valve (ECV) Setting	kPa	1200	1200
Maximum Water Supply Pressure			
With ECV	kPa	960	960
Without ECV	kPa	1120	1120
Suitable for No. of People			
Moderate Climate		2-4	3-5
Cool Climate		2-3	3-4
Gas Type		Natural Gas / Propane	
Gas energy Rating		5.3	5.3
Hourly Gas Consumption	MJ	30	30

COMES ON STEADY, HOT AND STRONG

RHEEMPLUS® SOLUTIONS



RheemPlus® Electric

Electric Models			121125	121250	121315
Hot Water Delivery	Litres		125	250	315
Initial Storage Capacity	Litres		135	270	325
Height	A	mm	1340	1395	1640
Width	B	mm	480	640	640
Depth	C	mm	515	680	680
	D	mm	1102	1117	1317
	E	mm	64	73	113
	F	mm	84	128	128
	H	Degrees	23	32	32
	J	Degrees	58	88	88
	K	mm	550	700	700
	L	mm	200	270	270
Weight (Empty)	kg		48	72	89
Water Inlet / Outlet Connections	Rp		¾ - 20	¾ - 20	¾ - 20
Relief Valve Setting	kPa		1400	1000	1000
Expansion Control Valve (ECV) Setting	kPa		1200	850	850
Maximum Water Supply Pressure					
With ECV	kPa		960	680	680
Without ECV	kPa		1120	800	800
Suitable for No. of People					
Continuous tariff			2-3	3-5	4-6
Off peak tariff			-	1-3	2-4

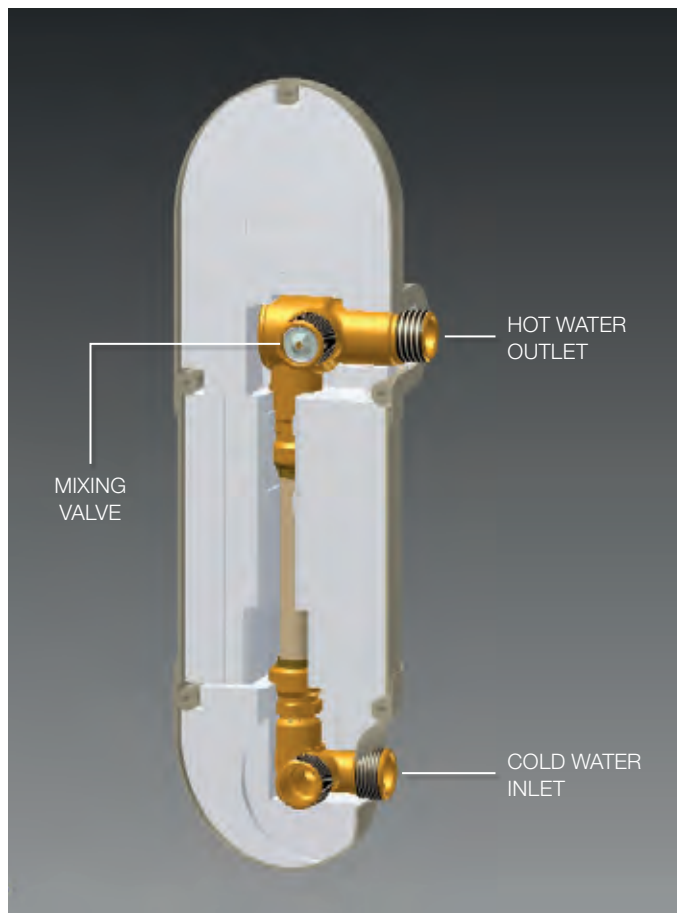
RheemPlus® MPI Series Heat Pump

Heat Pump Models			554325	554410 ³
Hot Water Delivery			315	400
Initial Storage Capacity			325	410
Height	A	mm	1636	1842
Width	B	mm	976	1044
Depth	C	mm	638	686
Weight tank (Empty)	kg		90	112
Weight Heat Pump Module	kg		42	42
Water Inlet / Outlet Connections	Rp		¾ - 20	¾ - 20
Relief Valve Setting	kPa		1000	1000
Expansion Control Valve (ECV) Setting	kPa		850	850
Maximum Water Supply Pressure				
With ECV	kPa		680	680
Without ECV	kPa		800	800
Suitable for No. of People				
Moderate Climate			2-5	2-6
Cool Climate			N/A	N/A
Power Input Heat Pump	Watts		800	800
Power Input Elements	kW		2.4 or 3.6	2.4 or 3.6
Refrigerant			R134a	R134a

INSTALL A



RHEEMPLUS® SOLUTIONS



Rear view – RheemPlus® integrated mixing valve.

EASY INSTALLATION

RheemPlus® eliminates all the guesswork and reduces the installation time associated with plumbing a tempering valve into a hot water supply. Neatly concealing all plumbing behind the insulated cover, RheemPlus® does all the hard work for you, leaving a cold and hot water connection. It couldn't be any easier.

ADDED FEATURES

The insulated side cover hides the interconnecting pipe-work and also reduces heat loss. RheemPlus® is factory set to deliver water not exceeding 50°C although is adjustable to deliver 50°C water at the tap².

RHEEM RELIABILITY

RheemPlus® gives you peace of mind and is available in a range of gas, electric and heat pump models. RheemPlus® provides safe hot water at mains pressure to multiple taps and is backed by the Rheem warranty.¹ RheemPlus® – leading the way in safer, efficient hot water.

¹ **Warranty Conditions.** See the Rheem warranty set out in the Owner's Guide & Installation Instructions or view at www.rheem.com.au/warranty.

² 50°C factory pre-set models supply hot water to a maximum 50°C at all outlets in accordance with AS3498. Some applications may require tempering, refer to AS/NZS3500.4.

³ MPi410 only recommended for Nth NSW & QLD.

Materials and data are subject to change without notice.

* Registered Trademark of Rheem Australia Pty Ltd.

© Rheem Australia Pty Ltd July 2013. Neither whole or part of this publication may be reproduced without prior permission.



Quality
ISO 9001



AS 3498
WMKA00153

Rheem Australia Pty Ltd.

1 Alan Street, Rydalmere, New South Wales 2116, Australia
PO Box 6, Rydalmere, New South Wales 2116, Australia.

